



YUKIZNA

The most sophisticated hexagonal weaving system of leather
dedicated to the creativity-driven designers for countless applications.



【ABOUT YUKIZNA】

Upon the event of March 11th 2011, the owner of YUKIZNA, Builmatel.Co.,Ltd decided to take concrete actions to encourage people in the devastated area. Working together with the native manufacturer Astro-Tech, Builmatel has launched a 'dream' brand, Yukizna, meaning of 'mutual aid' and 'bond'. Thanks to the expertise and technology of Astro-Tech, this most sophisticated hexagonal weaving system for leather was realized.

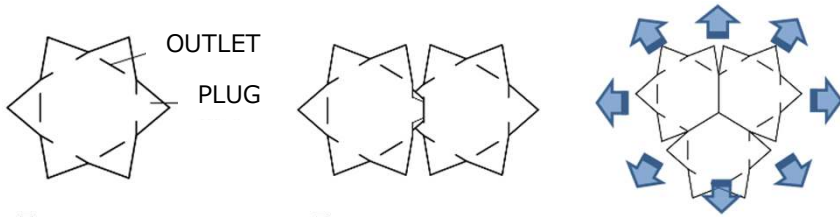
Binding the pieces into one YUKIZNA Sheet by hands does link the meaning of "YUKIZNA"
: gathering up the every single effort to accomplish the goal, which is indeed our brand philosophy.

The town where Astro-Tech is located is Minami-Sanriku-cho of MIYAGI prefecture, the most damaged area by TSUNAMI.

MAKING PROCESS and APPLICATION

【YUKIZNA SHEET】

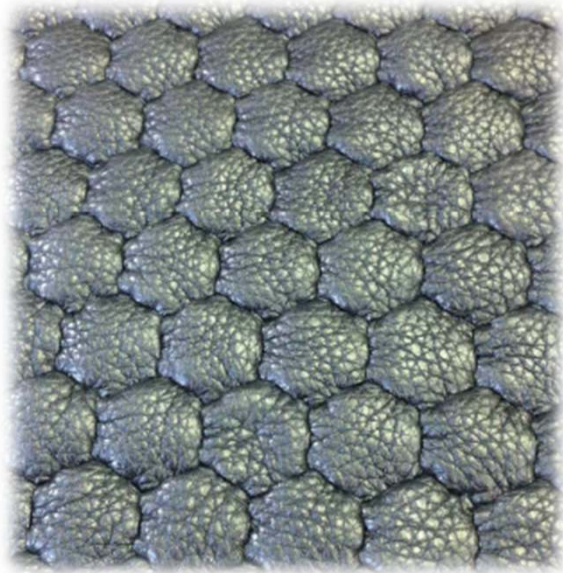
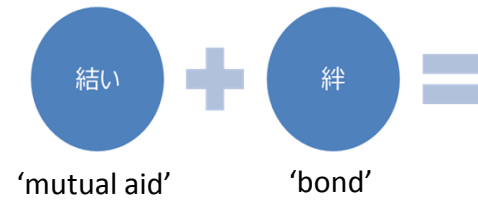
- weaving hexagonal pieces to create a unique honeycomb pattern.
- ALL hand-crafted.



【A third dimension】

- ① We solve out the best thickness by testing every 0.1mm
- ② Only by gaining an uniform strength in pulling between every pieces , make an ideal honey-comb construction.

※It won't let the tension release once it's woven as long as the material get damaged.



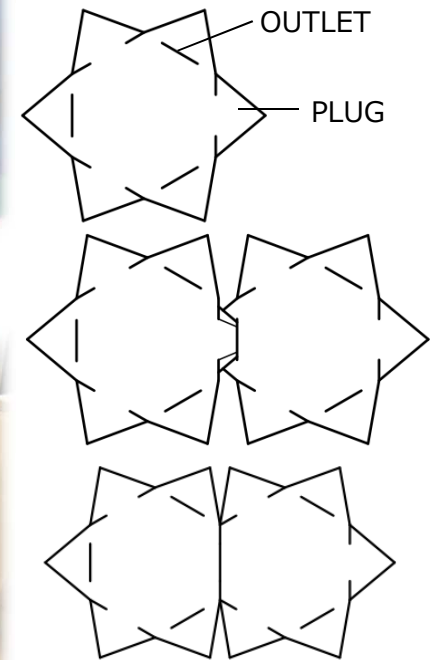
【The operations in hand-crafted YUKIZNA SHEET】



Piece cutting



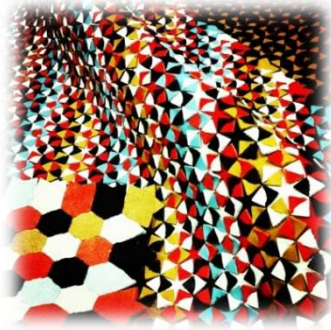
Hand weaving



【Variation on the expression】

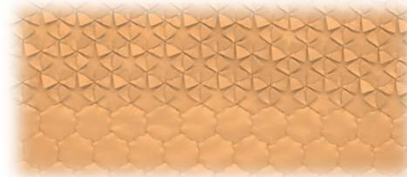
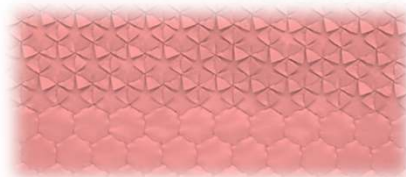
【reversing】

•The one of the example when the sheet is designed in the other way around.



【combinations of reverse and obverse】

•By using the both sides of the pattern could broaden designs.



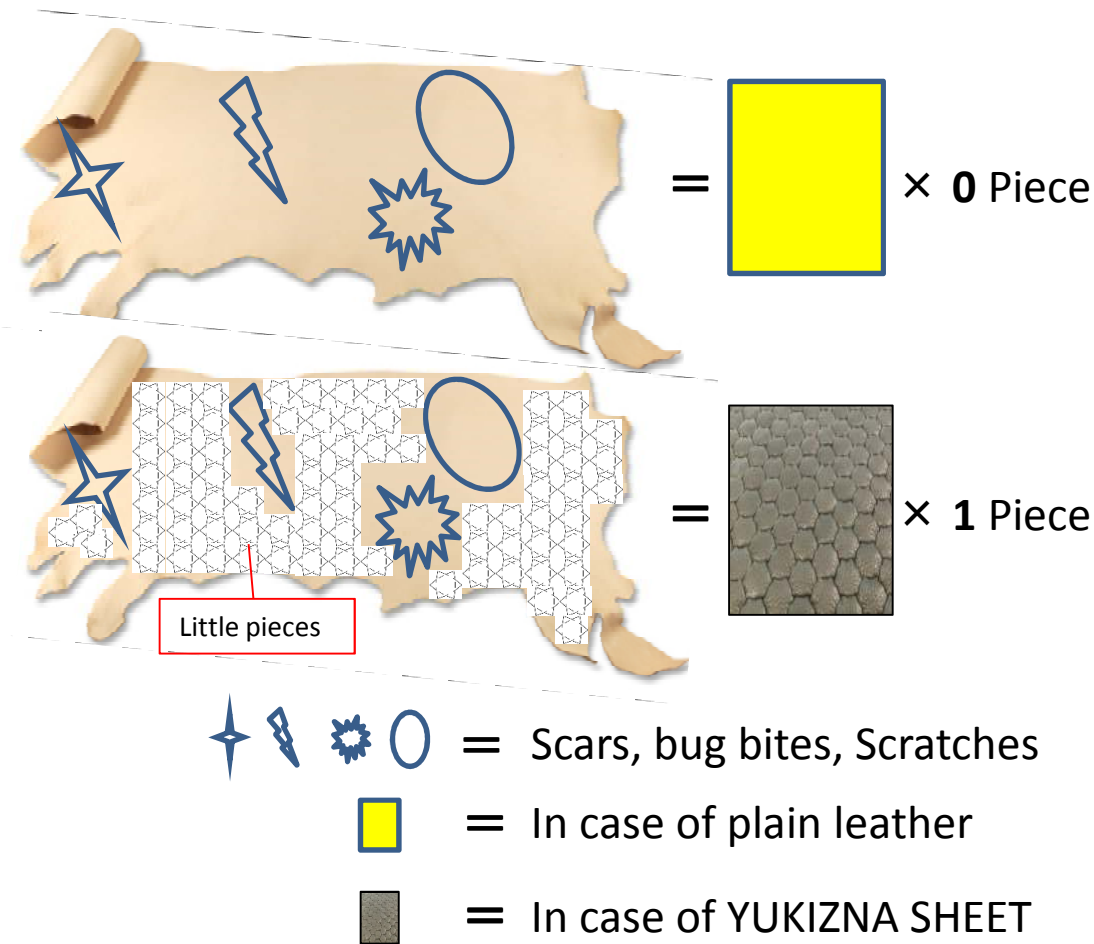
【custom made】

•This technique can realize Custom made because the color scheme is free.



【Maximization of use】

- YUKIZNA allows the maximization of use and the minimization of the loss of leather.
Even if the leather condition would not be perfect, YUKIZNA is still able to bring the value to it until the very last cut piece.

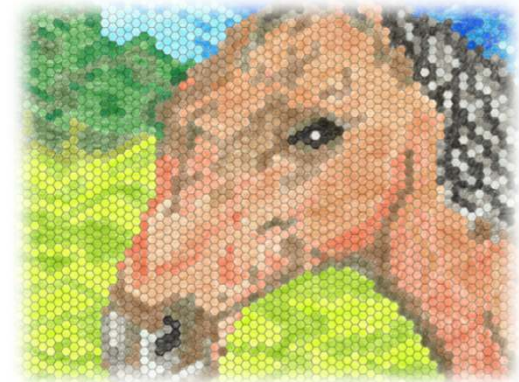


YUKIZNA

【Expressive variation】

【mosaic】

- Weaving colorful YUKIZNA pieces hexagonally with a mosaic way creates wide versatility.



PATENT and HISTORY

Builmatel teamed up with Tama Art University in Japan in 2008 to sponsor student design projects that would explore new fastening techniques. Along with the university patented the concept and then began the search for a factory that could industrialize the technique for commercialization.

(12) **United States Patent**
Lee

(10) **Patent No.:** **US 8,147,940 B2**
(45) **Date of Patent:** **Apr. 3, 2012**

(54) **PIECE OF CLOTH AND CLOTH PRODUCT
CONSISTING OF A LARGE NUMBER OF
PIECES OF CLOTH**

(75) Inventor: **Jungeun Lee**, London (GB)

(73) Assignee: **Builmatel Co., Ltd.**, Tokyo (JP)

(*) Notice: Subject to any disclaimer, the term of this patent is extended or adjusted under 35 U.S.C. 154(b) by 0 days.

(21) Appl. No.: **13/138,383**

(22) PCT Filed: **Feb. 15, 2010**

(86) PCT No.: **PCT/JP2010/052232**

§ 371 (c)(1),
(2), (4) Date: **Aug. 8, 2011**

(87) PCT Pub. No.: **WO2010/095605**

PCT Pub. Date: **Aug. 26, 2010**

(65) **Prior Publication Data**

US 2011/0293875 A1 Dec. 1, 2011

(30) **Foreign Application Priority Data**

Feb. 19, 2009 (JP) 2009-037029
Nov. 6, 2009 (JP) 2009-254507

(51) **Int. Cl.**
B32B 3/10 (2006.01)

(52) **U.S. Cl.** **428/52; 428/33; 428/53**

(58) **Field of Classification Search** 428/33,
428/52, 53; 2/243.1; 446/124, 125
See application file for complete search history.

(56) **References Cited**

U.S. PATENT DOCUMENTS

5,592,691 A 1/1997 Ronald

FOREIGN PATENT DOCUMENTS

JP S55-57795 4/1980
JP U S60-117496 8/1985

(Continued)

OTHER PUBLICATIONS

English translation of Abstract for U3114437.

(Continued)

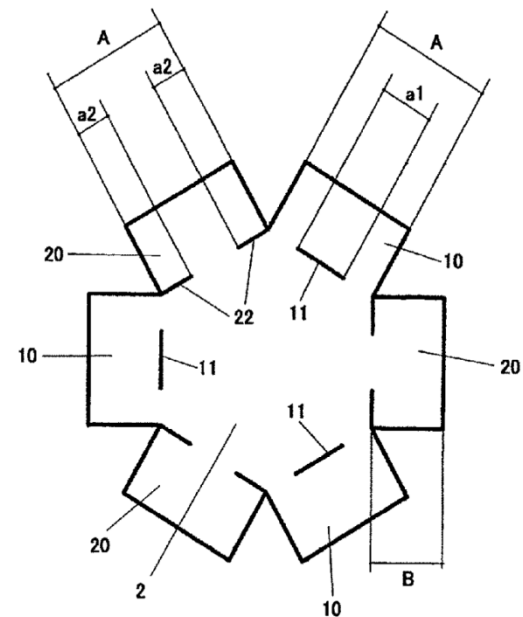
Primary Examiner — Alexander Thomas

(74) *Attorney, Agent, or Firm* — Manabu Kanesaka

(57) **ABSTRACT**

Provided is a piece of cloth, wherein clothing composed of a soft and lightweight material can be constituted of flat small pieces. A piece of cloth consists of a hexagonal central part, and first and second peripheral edge parts located alternately at the peripheral edges of the central part. The first and second peripheral edge parts share one side of the hexagons, a first cut having a length shorter than the length of the side but longer than a quarter thereof is made in the border line of the first peripheral edge part and the central part, and second cuts having a length equal to or slightly longer than one half of [(the length of the side)-(the length of the first cut)] are made on the border line of the second peripheral edge part and the central part from the opposite ends of the side.

7 Claims, 6 Drawing Sheets





Patent & Trade Mark

Patent

JP: 4480791

US: 8147940

EP: 2394670

CN: 102281780

KR: 10-1170281

Registered trade mark: YUKIZNA

JP: 5459243

US: 4204263

EU: 1110536

KR: 1110536

Registered trade mark: the bee

JP: 5709253

International reg : 1240535